

9 Finish

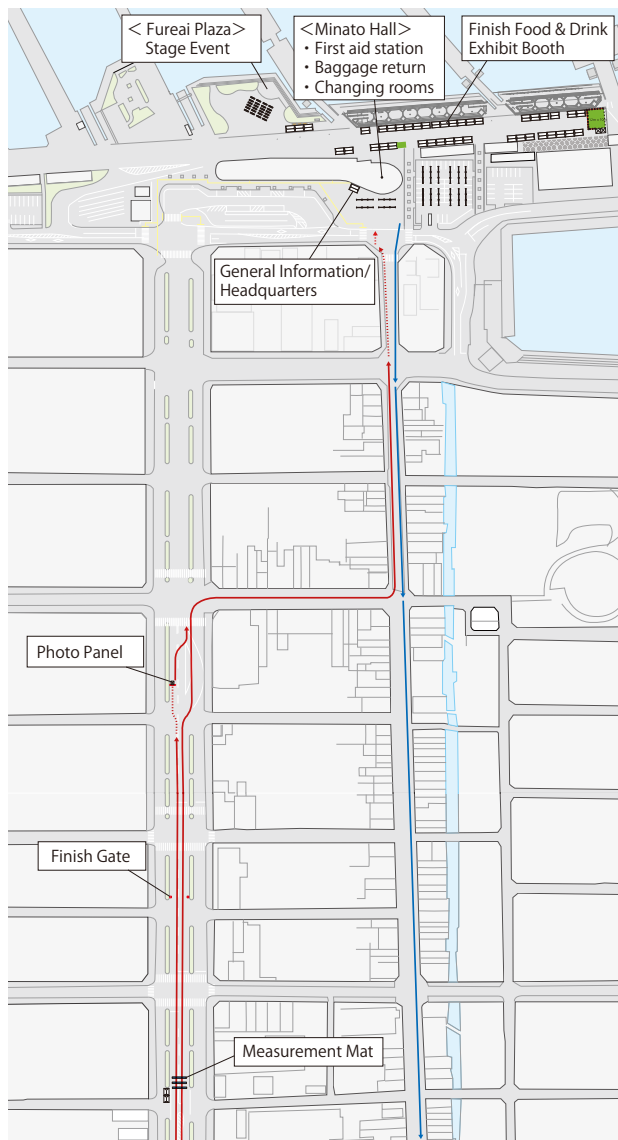
← Entry flow line

← Return flow line

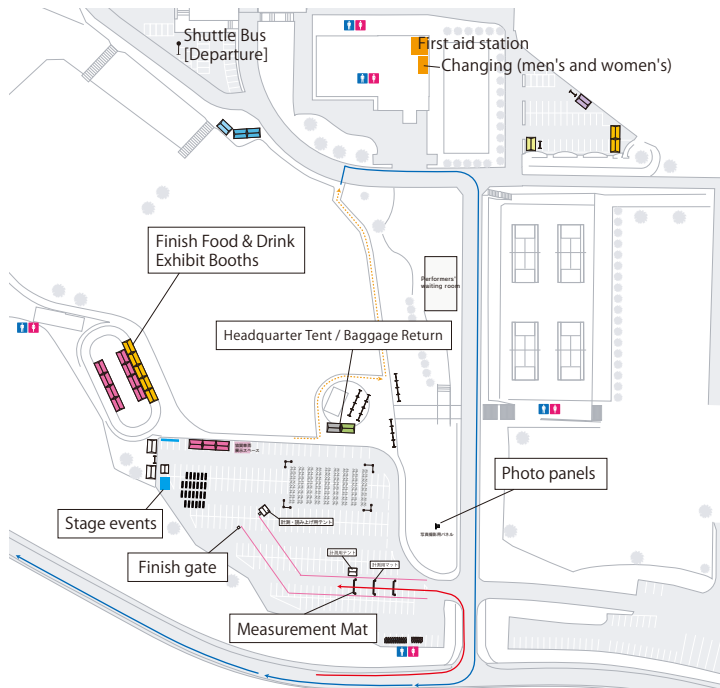
※Layout is subject to change.

Finish Venue layout

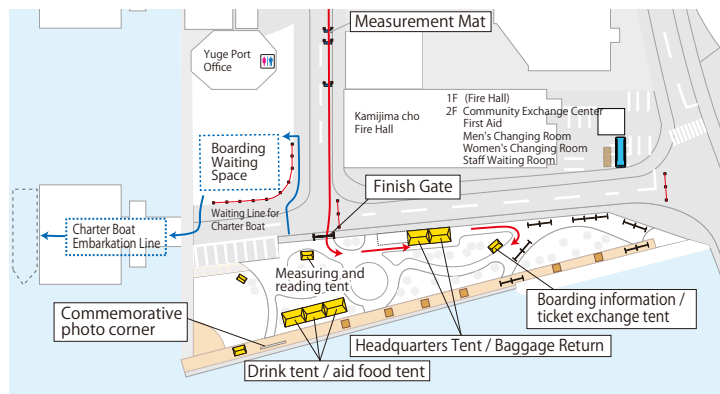
Finish Venue **A D G H** course (Hirokoji, Habari)



Finish Venue **B C E** course (Mukaishima Sports Park)



Finish Venue **F** course (Yuge Harbor)



Finish place time limit

Courses	Finish line and baggage return area	Time limit	Baggage return time (tentative)
Course A	Hirokoji Habari (Imabari)	16:30	10:30-16:30
Course D			
Course G			
Course H			
Course B	Mukaishima Sports Park (Mukaishima)	15:45	11:00-15:45
Course C			
Course E			
Course F	Yuge Harbor (Kamijima)	16:00	11:00-16:00

Measuring chip for the passage check (bicycle bib number)

The measuring chip is disposable and does not need to be returned.

certificate of completion

Participants who complete the event within the time limit will be issued a Web Finisher's Certificate. Please download the Web Finisher's Certificate from the official website of the event.

Baggage Return

To return baggage checked in on the day of the event, you will need to present your bib number. Please check your own bib number when you pick up your baggage, just to be sure that you do not get your baggage mixed up. ※Arrival of baggage may be delayed due to traffic conditions. Please understand this in advance.

Finish food

Finish food will be available at each finish venue, but each person will be offered one type of food. (Receiving and signing will be carried out on the bib) Two types of finish food will be available at the Habari-Mukaishima Sports Park

Post-Finish Notes

- Please note that we are not responsible for theft or loss of bicycles or baggage after return.
- After the finish, please obey all traffic laws and regulations and be careful of traffic accidents when riding your bicycle.